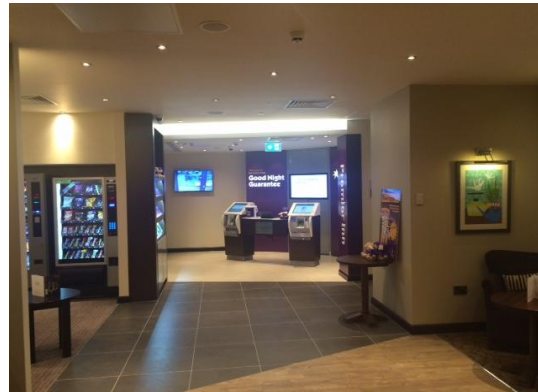


## The Premier Inn, Maidenhead



Location: Maidenhead, Berkshire

Client: Whitbread

Consultant: Caldwell Consulting Tel: +44 28 9069 9720

Architect: White Ink Tel: +44 (0)28 9031 9526

Project Manager: Mervin Church and Richard Gilmour

Completion: December 2015

Value: £9m

At 48,000 square feet, the Premier Inn, Maidenhead boasts 122 hotel bedrooms over eight floors and a plush open lobby with floating upper levels. It also has a restaurant, café and associated supporting areas, as well as a two-story underground car park for over 50 vehicles and 30 bicycles. Adjacent to this Hotel is a Grade-A office block known as 'The Pearce Building' which Michael Nugent also provided M&E services for.

Michael Nugent was responsible for the installation of all Mechanical and Electrical services for the Premier Inn including plumbing, heating, sanitation, mains water distribution, lighting, alarms, and cabling.

### Services

- Full Ventilation supply and Installation
- Domestic mains Hot and Cold Water Distribution Supply and Fit
- Sanitary Ware Installation
- Full Above Ground and Rainwater Drainage Pipework
- Full Gas Pipework Installation
- CHP System Installation
- Full BMS system
- Main switchgear Installation
- Sub-mains cabling
- General, Emergency and External Lighting
- Fire Detection and Alarms
- Disabled Refuge system
- Deaf alert system
- Disabled toilet alarm system
- Mechanical controls cabling
- Data & Telephone Cabling
- Generator and supplies to fire fighting services