

## Marigold House

### Leighton Buzzard

**Client:**  
Central Bedfordshire Council

**Consultant:**  
Concertus Design & Property Consultants

**Main Contractor:**  
Farrans Construction

**Architect:**  
Concertus Design & Property Consultants

**NUGENT Mechanical:**  
Mervin Church

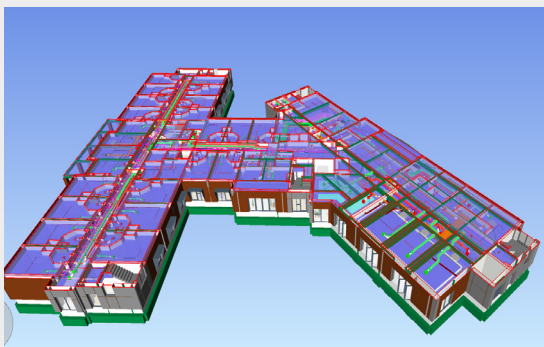
**NUGENT Electrical:**  
Chris Walker

**Completion:**  
Ongoing

**Value:** £13m



The 63 bedroom care home entails; en-suite bedrooms, specialist bathing facilities, hairdresser, on-site catering, private & outdoor space, communal spaces for residents etc. The building is designed to the highest sustainable standards using Passivhaus criteria to deliver an energy efficient building with air source heat pumps being the main source of heating.



### MEP services installed by NUGENT

- Ventilation Supply & Installation
- Full Domestic Water Services Supply & Installation
- Sanitary Ware Installation
- Foul & Rainwater Pipework Installation
- Gas Pipework Installation
- Run Around Coil Heat Recovery System on the toilet extract systems
- AHU's
- Gas Fired Water Heaters
- Dry Riser Installation
- Flue Installation
- BMS Control Systems Installation
- Gas Detection System Installation
- Sub Mains Cabling
- All Lighting - General, Emergency, External
- Fire Detection & Alarms
- Disabled Refuge System
- Disabled Toilet Alarm System
- Mechanical Controls Cabling
- Data & Telephone